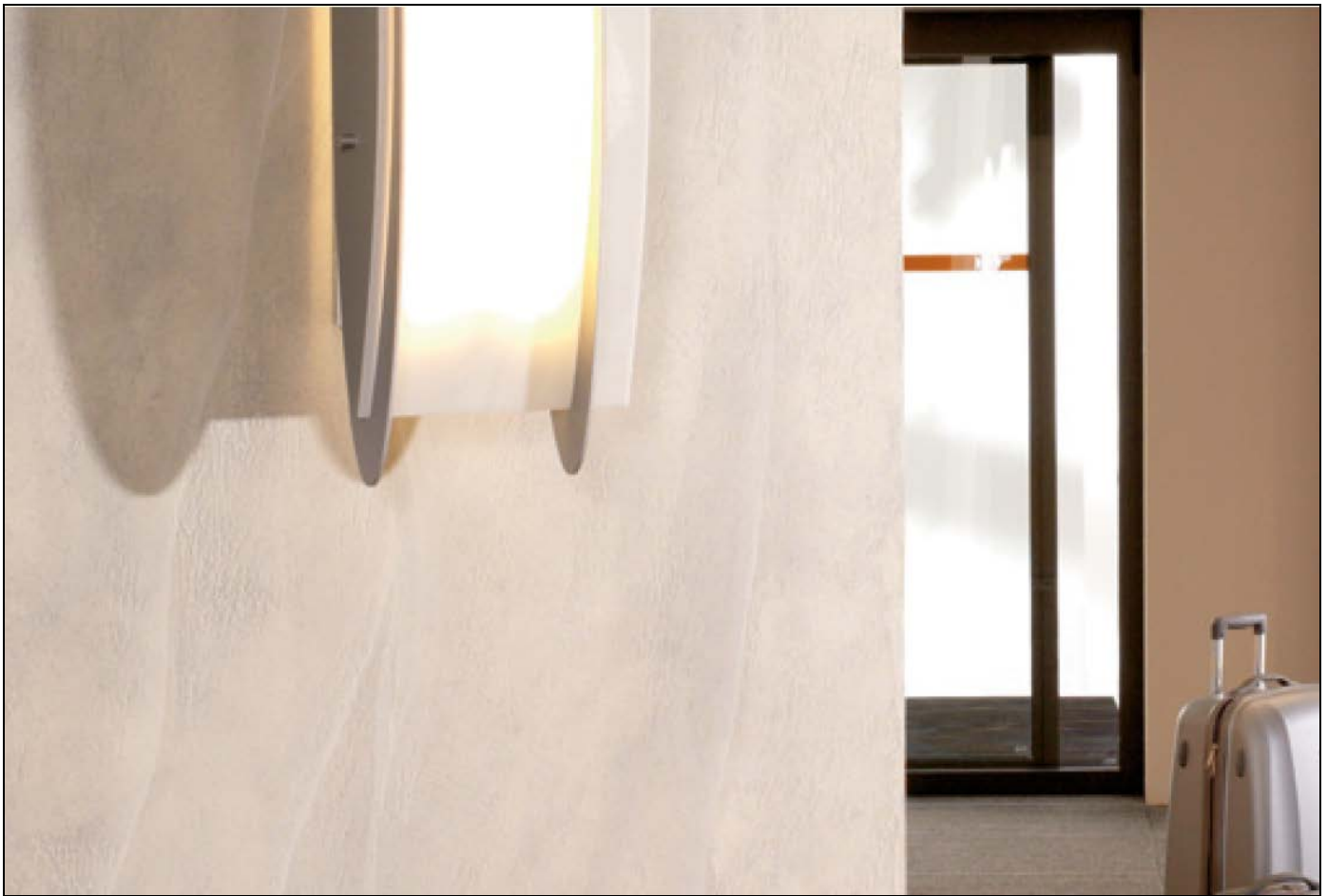


Travertine technique

Travertintechnik

with emulsion paint for multicolor,
glazing, relief-type surfaces
with a travertine character



The figure shows a variant of the creative technique and should convey an impression of the surface effect to be achieved. There is no guarantee that the exact color will be reproduced.

Prime coat: Adhesion Primer ELF 3720, color shade Scala 99.00.33

Texture coat: Creativ Granulato 71, color shade Scala 03.03.03

Decorating step: Creativ Viviato 72, color shades 0095 white, 7239, 7283 and 7278

Characteristics

Travertine (spring tufa) is a white or yellowish to brown porous limestone, deposited by cold or warm freshwater springs. The porous structure of travertine is caused by the decomposition of enclosed plants or plant components.

With the travertine technique, the surface of this natural stone can be imitated very realistically by combining a specially textured substrate with various glaze techniques in natural stone colors.

Field of application

For unique designs on interior walls. For visual emphasis of wall mirrors, skirting areas, columns etc.

When using this creative technique, the surface is generally divided up into individual partial areas (realistic stone block shapes). However, the technique can also be executed over the entire surface without creating joints.

Application

Substrate condition

The substrate must be solid, dry, clean, load-bearing, pore-free and smoothly filled using, for example, Mineral Hand-Applying Filler 1886. Prime the sanded, dust-free surfaces with Lacryl Deep Penetrating Primer ELF 595.

Prime coat

Apply a uniformly covering coating of Adhesion Primer ELF 3720, tinted, with light texture using Universal Paint Roller 1102.

Surface division and joint creation (optional)

Division into partial areas

For a particularly convincing implementation of the creative technique, the surfaces should generally be divided into individual partial areas with appropriate sizes. Realistic surface divisions, such as in rectangular block shapes, including joints, are particularly suitable. Before applying the actual creative technique, the partial areas must be treated as described in the steps below to achieve clearly pronounced joints.

Step 1

Prime coat, hole surface (joint color shade)

Use a Short-Fiber Paint Roller 1217 to apply a thin uniform coat with very slight texture of Dolomit 900, medium gray, over the whole surface.

Step 2

Surface division

Determine the surface division (the joint pattern) and carefully draw the outlines with a lead pencil. Mask the joints in accordance with the designed surface division with Tesaflex Fine Line Tape 3008, 3 mm. Please note! The individual stone block elements are treated one after the other as described below. If it is not possible to mask the individual stone block elements when using the Travertine technique (smaller stone block formats the adjacent edges must be kept moist to avoid excessively rapid drying to a great degree).

Texture coat

Use a Stainless Steel Trowel 1150 to apply a medium uniform coat of Creativ Granulato 71, white or light tinted, or Creativ Roccolato 73, white (1.5 fold grain size). Texture the surface immediately afterwards with a Foam Texturing Roller 1104 in one direction (either horizontal or vertical) non-uniformly.

After a short flash-off time, carefully break the texture peaks extending above the surface with Venetian Trowel 1764. Proceed with the smoothing process in the direction of the previously created texture. Remove the masking tape before the coating is dry. Once the surface is dry, sand the surface with 80 grit sandpaper to eliminate coarse unevenness.

If joints have been created (optional), remove the tape before allowing the coating to dry, and re-cover the joints with Tesaflex Fine Line Tape 3008, 9 mm, after drying.

1st Decorating step

The main and accent color shades consist of Creativ Viviato 72, tinted, diluted with water up to 2:1 depending on the requirements. The main and accent color shades consist of Creativ Viviato 72, tinted, diluted with water up to 2:1 depending on the requirements. To this end, first precoat the substrate with Creativ Viviato 72, colorless, diluted 2:1 with water, then apply a thin, non-uniform coat of the main color with the Short Fiber Paint Roller 1217. Immediately afterwards, partially apply 2 accent colors with the Oil Fine Liner 1239 or the Paint Brush Professional, flat 1209 as oblong, unevenly shaped structures, then pre-texture with the Deco Wiper 1192 and finish texturing with a short fiber roller in the same direction as the stone texture.

Alternatively, a separate color can also be created for this with Creativ Viviato 72, base material colorized with Dolomit ELF 900, tinted (added quantity 5 – 10%). If present, the joint tape must be cleared of excess glaze material using a fine liner immediately after creating the surfaces. It may be necessary to carefully smooth the glazed surfaces afterwards again with the Deco Wiper 1192. It may be necessary to carefully smoothen the glazed surfaces afterwards again with the Deco Wiper 1192.

2nd Decorating step – optional

Once all the surfaces are dry, perform the second decorating step.

Depending on the size of the partial surfaces, it may be necessary to moisten the adjacent border areas and to keep them moist with diluted base material before working on the individual stone block elements to largely avoid fusing the colors used.

Use a Short-Fiber Paint Roller 1217 to apply a thin coat of Creativ Viviato 72, lightly tinted, depending on the main color shade of the first decorating step.

Use a Short-Fiber Paint Roller 1217 to apply a thin coat of Creativ Viviato 72, lightly tinted, depending on the main color shade of the first decorating step. Use a Lining Fitch 1239 or Flat Paint Brush 1209 immediately afterwards to partially and non-systematically apply the main color shade used in the first decorating step. Use a Deco Wiper 1192 to cause the colors to flow into each other until cloudy, and retexture with a Short-Fiber Paint Roller 1217 in direction of the stone structure. Remove masking tapes directly after the second decorating step or after the glaze is dry.

Colorless overcoat (optional)

To make the surface more robust and minimize the “writing effect” on matt coats, the surfaces can be coated with a protective coat consisting of a mixture of Creativ Viviato 72, colorless and 5% Safe-Step 841 diluted by approximately 6% with water. Apply the colorless overcoat wet-in-wet as an even, thin layer in a criss-crossing pattern with the Microfiber Paint Roller 1221. The colorless finishing coat influences the color brilliance of intensive colors. We recommend

first trying out the technique on a test surface to evaluate the color effect. Heed the “Creativ Viviato 72” Data Sheet.

Notes

Masking tapes

Masking tapes should only be applied immediately before each decorating step and removed again immediately after the work has finished.

Perform the decorating steps properly

To achieve an edge-free surface look, perform the application and texturing rapidly, distribute and smooth the surfaces uniformly and only once. Repeated working of the fresh, still damp surfaces should absolutely be avoided.

Assessing the test areas

The description of how this technique is performed is a tried-and-tested standard method which can be modified and expanded according to the user's own creativity.

The general appearance of a creative technique is determined by the color choice and combination, how the technique in question is performed and by the decorator's individual style. We recommend preparing test areas to get an impression of how the surface will look.

Further specifications

For further product information, see the information on the data sheets of the other products used.

Remark

This information is the result of many years of practical experience. The content of this data sheet does not constitute a contractual legal relationship. All information has been translated from the German version. The person using our paints is responsible for checking our products with regard to their suitability for the intended application. In addition, our General Terms of Business apply.

When a new version of this Data Sheet appears with updated information the previous version no longer applies.

Brillux
Weseler Straße 401
48163 Münster
GERMANY
Phone +49 251 7188-0
Fax +49 251 7188-105
info@brillux.de
www.brillux.com

List of materials and tools

Travertine technique

• Smoothing the substrate

Material/Tool	Consumption
Mineral Hand Applying Light Filler 1886	approx. 1,0 l/m ²
Lacryl Deep Penetrating Primer ELF 595	approx. 150–200 ml/m ²

• Prime coat

Adhesion Primer ELF 3720	approx. 150 ml/m ²
Universal Paint Roller 1102	

• Joint creation (optional)

Step 1 – Prime coat, hole surface

Super Latex ELF 3000, tinted or	approx. 130 ml/m ²
Dolomit ELF 900 tinted	
Microfiber Paint Roller 1221	

Step 2 – Surface division

Tesaflex Fine Line Tape 3008, 3 mm	approx. 5 m/m ²
------------------------------------	----------------------------

• Texture coat

Creativ Granulato 71 or	approx. 1.500 g/m ²
Creativ Roccolato 73	
Stainless Steel Trowel 1150	
Foamed Texturing Roller, coarse 1104	
Venetian Trowel 1764	
StickFix Brilliant Sanding Disks 150 mm, 3243	approx. 1 piece/m ²
Tesaflex Fine Line Tape 3008, 3 mm (optional for joint creation)	approx. 5 m/m ²

• 1st Decorating step

Creativ Viviato 72, colorless (2:1 diluted)	approx. 100 ml/m
Creativ Viviato 72, tinted (main color)	approx. 100 ml/m ²
Short Fiber Paint Roller 1217	
Creativ Viviato 72, tinted (first accent color)	approx. 20 ml/m ²
Creativ Viviato 72, tinted (second accent color)	approx. 20 ml/m ²
Paint Brush Fine Liner, round 1239	
Paint Brush Professional, flat 1209	
Deco Wiper 1192	

• 2nd Decorating step (optional)

Creativ Viviato 72, tinted	approx. 100 ml/m ²
Short Fiber Paint Roller 1217	
Creativ Viviato 72, tinted (main color)	approx. 40 ml/m ²
Paint Brush Fine Liner, round 1239	
Paint Brush Professional, flat 1209	
Deco Wiper 1192	

• Colorless overcoat (optional)

Creativ Viviato 72, colorless	approx. 120 ml/m ²
Floortec Safe-Step 841	approx. 7 g/m ²
Short Fiber Paint Roller 1217	